

### Management Goal and Implementation Strategy ('FACT' Strategy)



- KMI homepage  
kmi.re.kr/eng
- KMI Youtube  
youtube.com/channel/UCjaHR4UJPwhd6FTDKw7fDCw
- KMI Official Blog(Haeonnuri)  
blog.naver.com/kmibada
- KMI e-Library  
library.kmi.re.kr
- Portal for Overseas Industry Information in Maritime and Fisheries  
kmi.re.kr/globalnews
- Marine Products Export Information Portal  
kfishinfo.net/kor
- Korea Polar Portal  
koreapolarportal.or.kr
- Fisheries Outlook Center  
foc.re.kr
- FTA Implementation Support Center  
fta.kmi.re.kr
- International Logistics Information Portal  
withlogis.co.kr



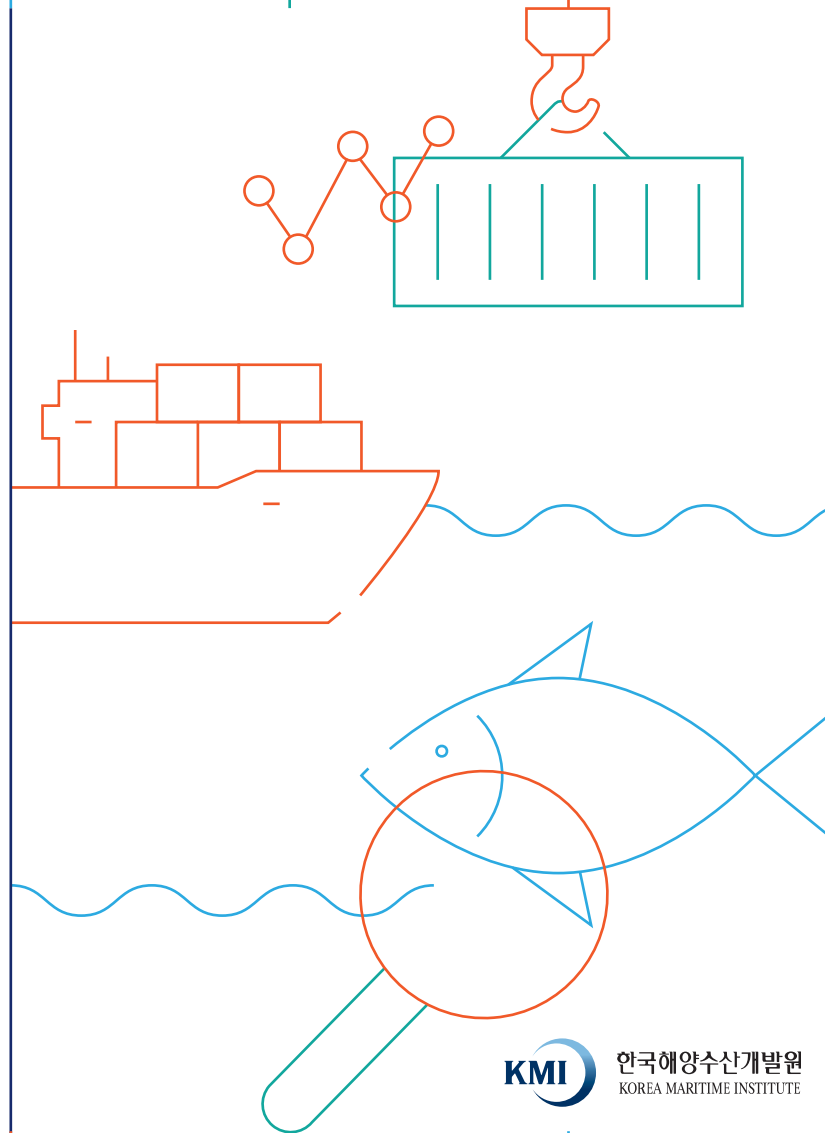
KMI Homepage



KMI YouTube

# KOREA MARITIME INSTITUTE

LEAD  
THE  
BLUE  
ECONOMY



KMI 한국해양수산개발원  
KOREA MARITIME INSTITUTE

## Korea Maritime Institute strives to become Field-based, Problem-solving Research Institute.

Greetings,

The Korea Maritime Institute (KMI) is a government-funded research institute established under the auspices of the Prime Minister's Office to contribute to the formulation of national policies in maritime and fisheries affairs pursuant of boosting the national economy.

Initially starting out in 1984 and consolidating into our current form in 1997, we have comprehensively investigated and researched tasks related to marine policy, fisheries, maritime affairs, ports, and international logistics. As a result, we have grown into a major research institution in the maritime and fisheries fields.

At present, our society is facing unpredictable economic and social challenges both domestically and internationally. AI and Big Data technologies are creating rapid changes, and we are facing unprecedented phenomena such as logistics disruption caused by the pandemic, the transition to carbon neutrality, and domestic and foreign changes surrounding the fisheries industry.

To overcome these challenges, KMI strives to become a problem-solving research institution and global opinion leader by doing policy research on the basis of proper understanding of science and high technology, always approaching the field head-on, and solving pending issues one by one.

KMI will continue to do its best to support government policies and win the trust of the people as well as local communities.

Thank you.

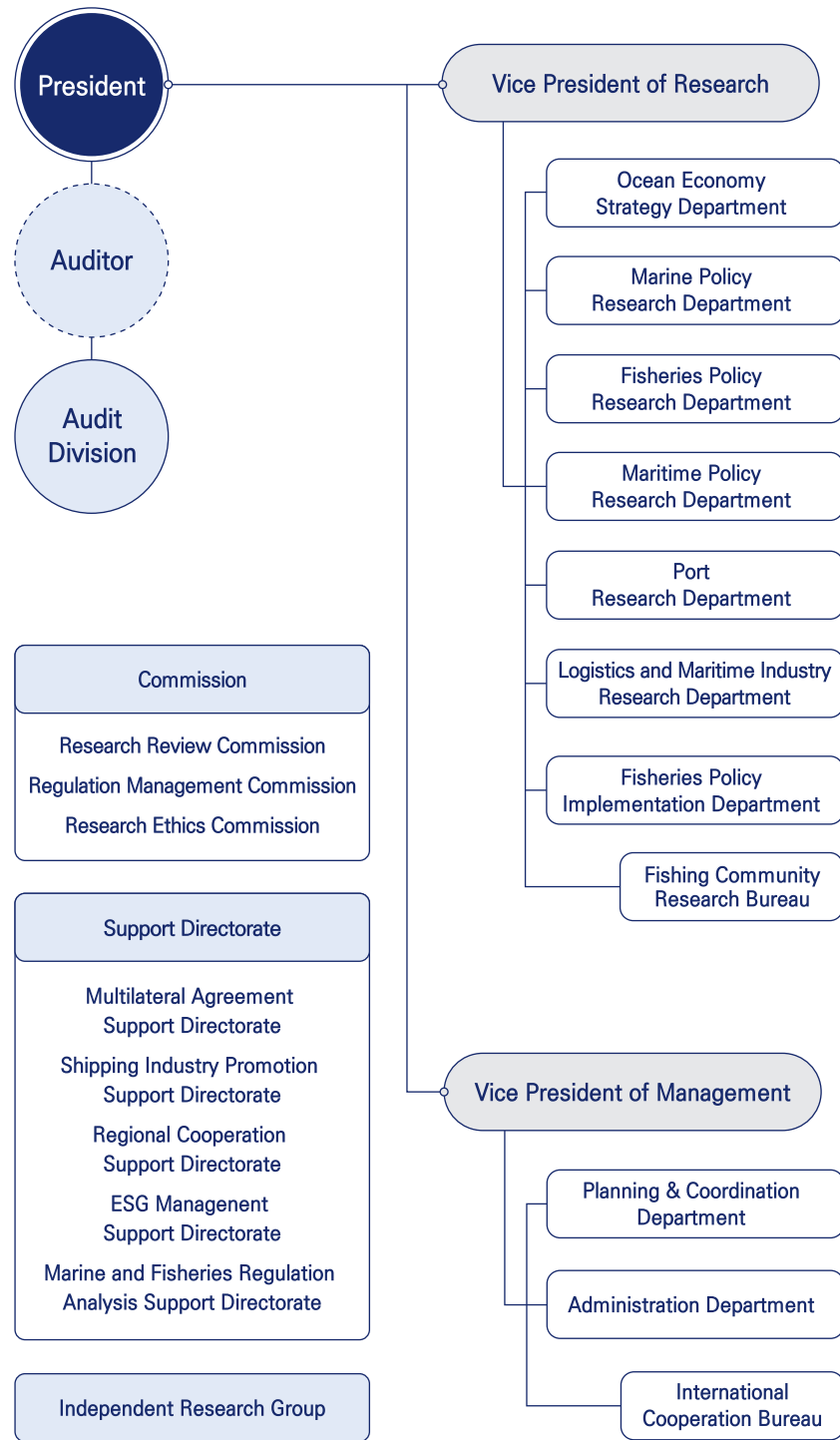
President **Jong-Deog Kim**



# KMI has guided the development of maritime and fisheries for the Republic of Korea

For the last three decades, KMI has driven national maritime and fisheries policy by suggesting countless policy measures. Going forward, KMI will continue in step with the advancement of Korea's maritime and fisheries industry.

1980 — 1999	1984	Feb. Opened the 「Korea Shipping Technology Institute,」
	1988	Dec. Renamed the organization the 「Shipping Industry Research Institute,」
	1997	Apr. Established the 「Korea Maritime Institute,」
2000 — 2010	1999	Jan. Changed KMI's affiliation to the Prime Minister's Secretariat in pursuant to the 「Act on the Establishment, Operation and Fostering of Government-funded Science and Technology Research Institutes, etc.,」
	2004	Apr. Established the 《Fisheries Outlook Center》
	2005	Dec. Established the 《Dokdo and the Law of the Sea Research Center》 Opened the 《China Research Center》
	2006	Aug. Established the 《Port Demand Analysis Center》
	2009	Jul. Established the 《Shipping Market Analysis Center》 current Maritime Big Data Analysis Center Aug. Opened the 《KMI Ocean Academy》
2011 — 2021	2012	Mar. Opened the 《Fishermen Support Center following FTA Implementation》
	2014	Jan. Held the 1st KMI Maritime and Fisheries Outlook Conference
	2015	Apr. Relocated to the Busan Office of the Korea Maritime Institute
	2016	Jul. Established the 《K-fish Information Center》
	2021	Dec. Kim Jong-Deog inaugurated as the 11th President



	<b>Ocean Economy Strategy Department</b>	Major research areas include industrial trends and statistics, marine tourism and leisure policies, Inter-Korean cooperation policies, New Northern policy and strategies for polar regions.
	<b>Marine Policy Research Department</b>	Main research areas include coasts and islands, marine space and environment, climate change, Dok-do & maritime territories and maritime law.
	<b>Fisheries Policy Research Department</b>	Main research areas include the fishing and fisheries industry such as fishery products supply and smart aquaculture, fishery resources, distant water fisheries and coastal fisheries.
	<b>Maritime Policy Research Department</b>	Major research areas include development strategies of the maritime industry, shipping transportation, national shipping finance, and big databased analysis on the shipping market.
	<b>Port Research Department</b>	Mainly conducting researches on the development of domestic and overseas ports, port management, port traffic analysis, the establishment of public investment projects and feasibility studies.
	<b>Logistics and Maritime Industry Research Department</b>	Major research areas include future logistics technology and systems, entering overseas logistics markets, the global supply chain and maritime international organization as well as maritime manpower.
	<b>Fisheries Policy Implementation Department</b>	Main research areas include the stable supply and demand systems for fishery products, promotion of exporting fishery products and FTA implementation supports.
	<b>Fishing Community Research Bureau</b>	Specific research areas include fishing community policies, fishing society and regional development, fishing economy, invigoration of private investment in fishing ports and disaster prevention.
	<b>International Cooperation Bureau</b>	Conducting researches on ocean and fisheries official development assistance and international research activities including analysis, research and studies on China.

<b>KMI Research Project Report</b>		
<ul style="list-style-type: none"> <li><b>Basic Research Report</b></li> </ul> <p>Outcome of basic research for providing the basis of an academic theory or guiding national policies including policy formation and managerial strategies</p>	<ul style="list-style-type: none"> <li><b>Spot Research Report</b></li> </ul> <p>Product of spot research for flexibly responding to research demand potentially arising from changing research environments and policy needs</p>	<ul style="list-style-type: none"> <li><b>General Research Report</b></li> </ul> <p>Summary of general research carried out by KMI, which is selected from mid-/long-term general projects invested by government funds</p>
<b>Academic Journals</b>		
<ul style="list-style-type: none"> <li><b>Ocean Policy Research</b></li> </ul> <p>The only academic journal in Korea specializing in the maritime industry, encompassing all maritime and fisheries sectors, including marine shipping, fisheries, ports and logistics (biannual, KCI registered since 2006)</p>	<ul style="list-style-type: none"> <li><b>KMI International Journal of Maritime Affairs and Fisheries</b></li> </ul> <p>English academic journal, providing the global perspectives and analysis data necessary for the legislation of maritime policy. The journal promotes international cooperation research by posting domestic and foreign research papers in the maritime and fisheries sector (biannual)</p>	
<b>Series</b>		
<ul style="list-style-type: none"> <li><b>Academic Series</b></li> </ul> <p>Series that present academic findings and theories that can contribute to academic development in the areas of marine and fisheries or other fields from the perspective of social scientists and experts</p>	<ul style="list-style-type: none"> <li><b>Policy Series</b></li> </ul> <p>Series that present national policies and explain innovative and developmental policy agendas that can proactively respond to future issues in the field of marine and fisheries</p>	